

DX-1006-T



integrate our innovative DXO Cartridge in to both new and existing systems. The Delta-Xero system can be configured up to 12 cartridges in parallel as a single unit in a compact and easily maintainable layout.

The unit can be supplied with a number of standard options to provide an effective fluid conditioning and monitoring package to suit the majority of systems. The flexibility of the unit allows tailoring to customer's specific requirements.



DX1006-T

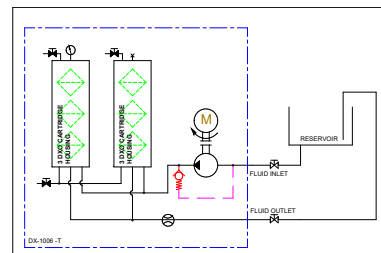
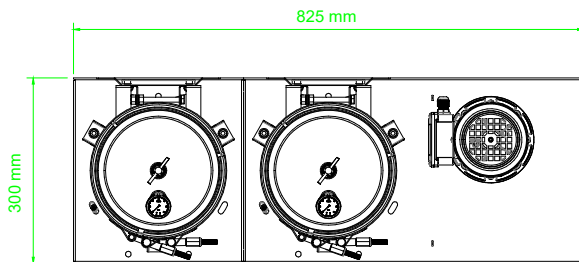
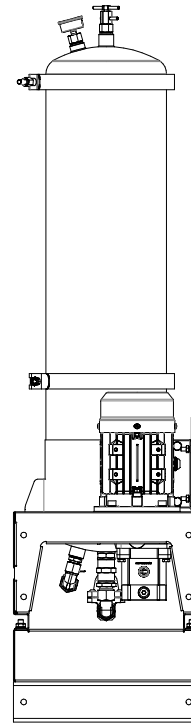
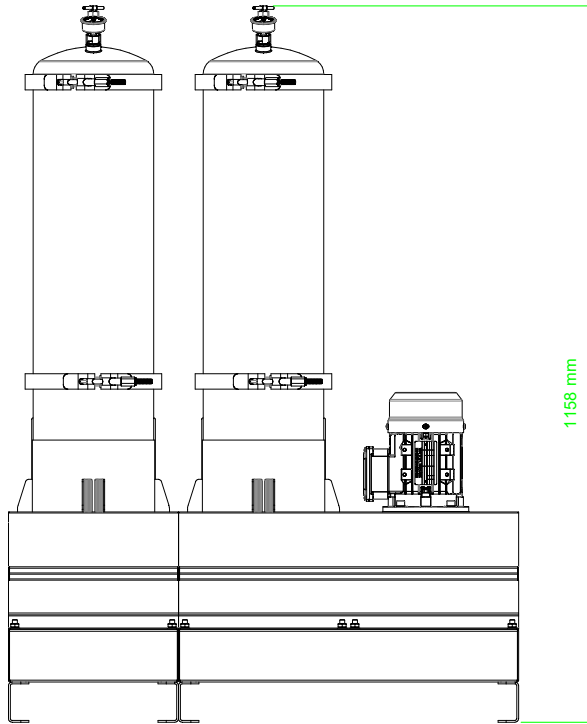
| | |
|-------------------------|---------------------------------|
| Drive Input | Electric or Pneumatic |
| Connection Ports | 3/8" BSP In & Out |
| Flow Indicator | Visual |
| Suggested System Volume | Up to 27000l @ 32cSt |
| Particulate Removal | From 0,1 µ |
| Weight | 55 kg |
| Dimensions | H 1158 mm x D 300 mm x L 825 mm |
| Material | SS316 |
| DXO Cartridge QTY | 6 |

Flow Rate varies depending on viscosity, pressure and temperature

| Approx flow at 2.7 bar: | 32 cSt | 46 cSt | 68 cSt | 100 cSt | 220 cSt | 320 cSt | 460 cSt |
|-------------------------|------------|-----------|-----------|-----------|-----------|-----------|-----------|
| Flow Rate | 6.25 l/min | 5.0 l/min | 4.0 l/min | 3.0 l/min | 2.0 l/min | 1.0 l/min | 0.6 l/min |
| Oil Volume | 27000ltrs | 21000ltrs | 18000ltrs | 14400ltrs | 10800ltrs | 4800ltrs | 2400ltrs |



General Arrangement



DXO Cartridge

| | |
|-----------------------------------|---------------------|
| Contamination capacity: | Up to 4.5kg per DXO |
| Water absorption, free and bound: | 2600ml |
| Material insert: | PP Cellulose mix |

